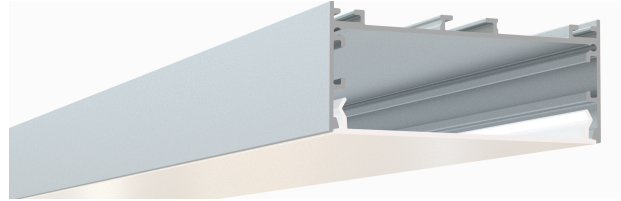


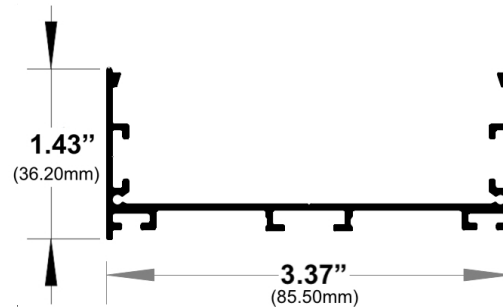
Surface / Pendant LED Channel - 1080

The **1080ASL** is a LED Channel compatible with **LED Strips up to 3.00" (76.20mm) wide**.

It can be used as a **Surface Mount Fixture** or can be used with Suspension Kit to build a **Pendant Fixture**.



Type:.....LED Channel
Material:....Aluminum 6063-T5
Surface:.....Clear Anodized
Height:.....36.20mm / 1.43"
Width:.....85.50mm / 3.37"



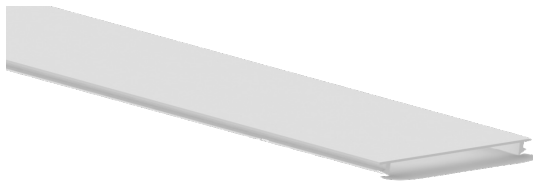
Length Availability

8ft (Actual Size 94") / 2.40m
10ft (Actual Size 118") / 3.00m

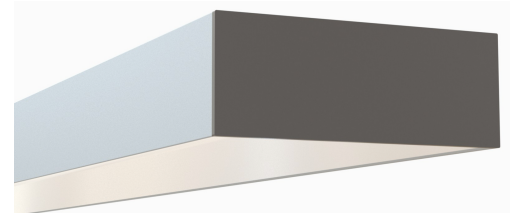


Accessories

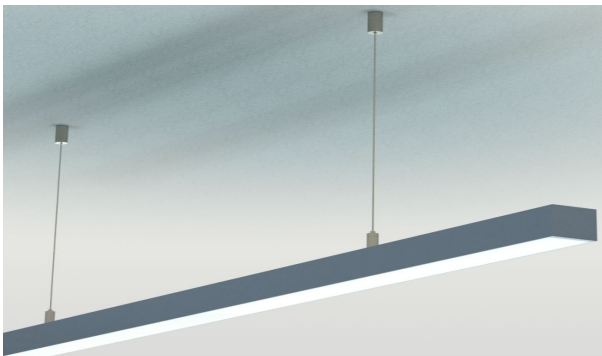
Diffuser Cover Lens



Frosted Diffuser – Polycarbonate



Mounting



Suspension Kit
(Includes 2 steel wires of 1.5m/4.92ft and connection parts)