

## Corner LED Channel - 1964 Series

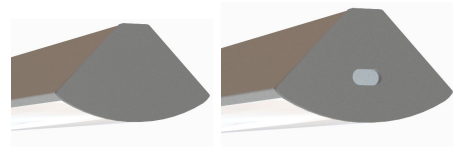
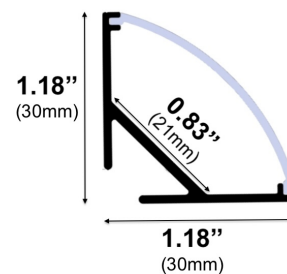
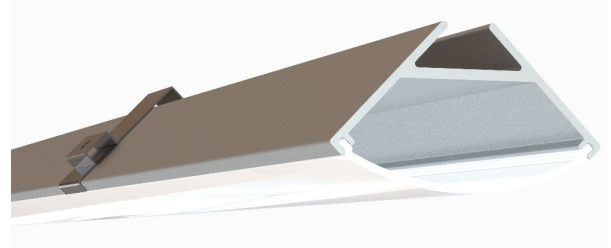
The **1964 Series** is a **Corner LED Channel** compatible with **LED Strips up-to 0.83" (21mm) wide**.

It's designed for **corner** installations with 45-degree lighting needs. Back-Channel groove helps for ease of wiring.

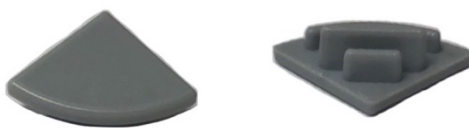
LED Channels provides **better cooling** and helps to **extend the lifespan of your LED Strip**.

Type:..... **LED Channel**  
 Material:...**Aluminum 6063-T5**  
 Surface:.....**Clear Anodized**  
 Height:.....**30.00mm / 1.18"**  
 Width:.....**30.00mm / 1.18"**

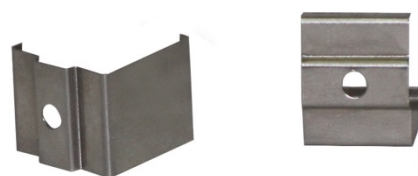
**Length Availability**  
 8ft (94") / 2.40m  
 10ft (118") / 3.00m



### Accessories



Plastic End Cap



Mounting Clips (Spring Steel)